

HIGOLD®

Live the excellent life

HIGOLD FURNITURE MANUFACTURING CO., LTD.

No.36, Shunye East Road, Xingtan Town,
Shunde District, Foshan City, Guangdong
Province, China. 528325

T: +86 757 27380273 / +86 757 27386391

E: info@higold.com.cn

W: www.higoldgroup.com

HIGOLD EUROPE HEAD OFFICE

Schokkerweg 5
8042 PC Zwolle
The Netherlands

T: +31 38 421 39 85 / +31 54 851 47 05

E: info@higoldeurope.eu

W: www.higoldeurope.eu

HIGOLD USA CORPORATION

1641 74th ST STE 1, Brooklyn, New York 11204

T: (+1) 212-461-0997

E: sales@higoldusa.net

W: www.higoldusa.net

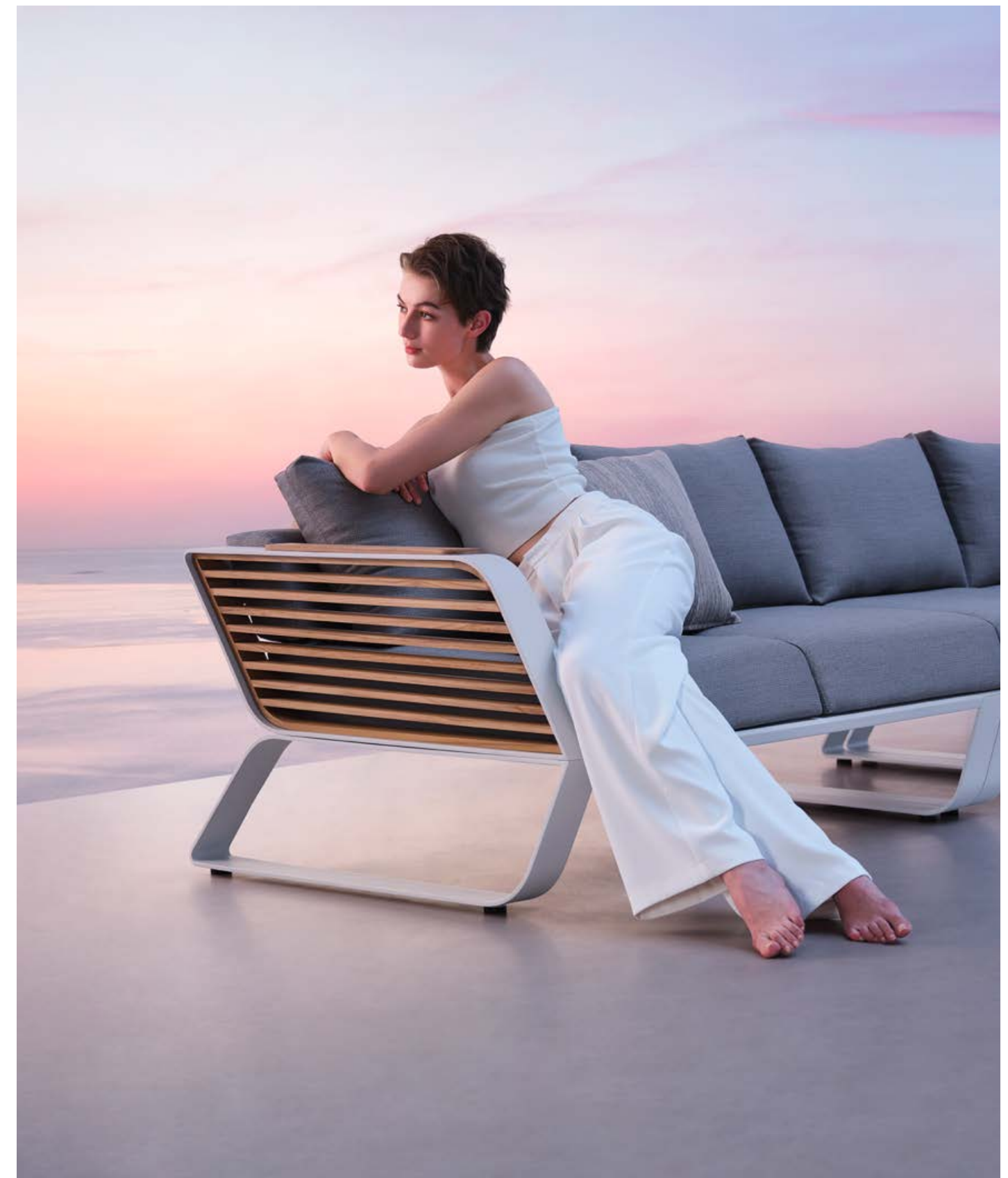


HIGOLD®

NEW COLLECTIONS 2023

HIGOLD®

Live the excellent life



NEW COLLECTIONS 2023



As a member of Higold, I am very happy to spend a good period of my life to work with you.

Higold relies on the top quality to promote the business development, and the top quality is achieved by the people and the management system. First of all, people are the manufacturers of products. Only excellent employees can produce top quality products. Secondly, the management system, especailly for quality management, is an effective guarantee for standardized and large-scale production of products. Therefore, the company will only grow when its employees grow, and the growth of individual employees is fundamentally consistent with the development direction of the company. Innovation is the eternal source of the company's development. In order to expand the enterprise living space, in order to open up more broad development for individuals, we need to be full of passion, maintain the source power of innovation, improve work efficiency, improve the quality of work, keeping surpass ourselves always.

In the background of a company who has the core competitiveness by improving the management innovation and the process reengineering comprehensively and who has enough opportunities and space for sustainable development and strives to create a level playing field, as long as you think and work hard, learn modestly and keep improving, you will be evaluated fairly eventually. More important thing, this learning mindset itself is a key to success.

Team work spirit and strong professionalism are the source of the inexhaustible strength for a company. You will obtain better play and achieve greater achievements only when you integrate your talents into a team. Based on the premise of a common goal and overall image, the company advocates the development of individuality and provides broad development space for employees. To win, you must first win yourself. We Only can surpass ourselves and our rivals by continuous learning and self-reflection. "Change" is our eternal theme, of course, "change" is also an experiment, whatever successes or failures, we will accommodate them with a broad mind. Standing at the starting line of the new century, let's arm ourselves with a new idea and inherit the essence of our advantageous culture. Let's extend the organization culture idea which is more beneficial to the enterprise development, and Let's build the dream team of the new century.

Finally, as a representative of the company's executives, what I care more about is the feelings of employees and whether they can grow and acheive their personal dreams in our company. At the same time, I sincerely thank you for what you have done for the company and your efforts as a member of this team, I wish you a happy work in the future!

-- Ou Jinfeng, chairman of Higold Group

Handwritten signature of Ou Jinfeng

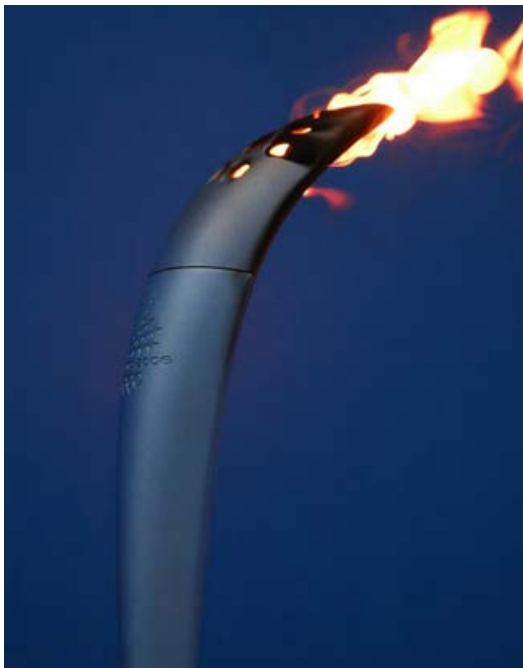


HIGOLD GROUP



wing





“Italian style means sense of proportions, simplicity and harmony of line, such that after a considerable time there is still something which is more alive than just a memory of beauty.”

[Battista ‘Pinin’ Farina]



by pininfarina

Pininfarina Extra, is part of the world-famous design house Pininfarina, whose history traces back to 1930 when the company was established by Battista Pinin-Farina, who became the most acclaimed car designer of his time. For example the Cisitalia 202 by Pininfarina (1947), was the first and only car to enter into a permanent display at the MoMA of New York, in 1961. Up to today, more than 100 Ferrari cars that have gone into production have been designed by Pininfarina.

In 1986, the third generation of the Pininfarina family created Pininfarina Extra srl to extend the design capabilities of the company, outside of the automotive sector. Over the past 30 years, Pininfarina Extra has developed more than 600 projects under the direction of its President and Chief Executive Officer, Paolo Pininfarina (now Chairman of the Pininfarina Group), and has established its own direction and a clear identity.

Today the company has ventured into a variety of commodity sectors where products bearing the Pininfarina name have won acclaim in the world's leading markets. The company attempts to blend the most advanced features of scientific, technological and engineering research with attractiveness that should accompany the things we use every day. Pininfarina Extra is a reliable and competent partner to firms wishing to use design as a strategic asset for their product development process and a tool of communication to improve their position in the market.

The main activities of the company include Industrial design (electronics, sporting goods, furniture, equipment and machinery, consumer products, graphic design and packaging), Architecture and interiors (residential, hospitality, sport and commercial structures), and Transportation design (Yachts, airplanes, private jets, people movers).

wing by pininfarina



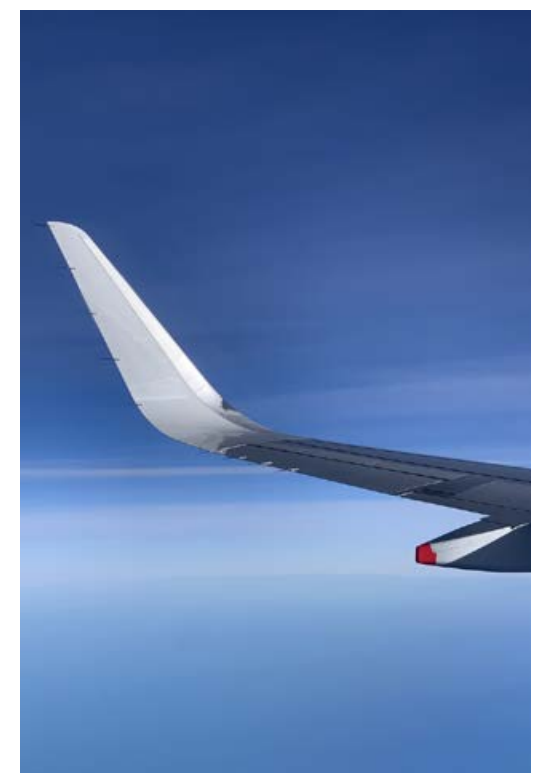
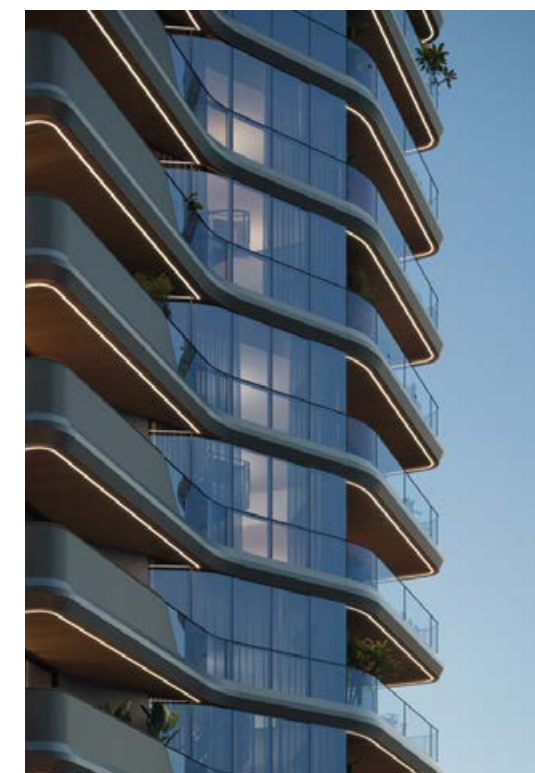
wing



DESIGN OF PININFARINA OUTDOOR FURNITURE

Inspired by the lightness of wing, the archetype par excellence that combines lightness and strength-in the WING collection, the designers were guided by the concept of physical and perceived lightness.

The dynamic, pure and elegant lines give the collection a style suitable for both urban contexts and environments where nature is the protagonist. The elements of the collection are characterized by a folded aluminum structure and enriched by geometric and essential lines that recall the world of architecture.





Inspired by the lightness of wing, the archetype par excellence that combines lightness and strength-in the WING collection, the designers were guided by the concept of physical and perceived lightness.









DESIGN OF PININFARINA
OUTDOOR FURNITURE

The dynamic, pure and elegant lines give the collection a style suitable for both urban contexts and environments where nature is the protagonist. The elements of the collection are characterized by a folded aluminum structure and enriched by geometric and essential lines that recall the world of architecture.







wing

Solid aluminum for space shuttle creates a dynamic,
pure and elegant lines.



Super thick cushions with high density foams for an extra soft seating experience.













A perfect match combined physical sturdy and perceived lightness.







204921
Single Sofa
Size: 855x890x605mm



204941
Three-seater Sofa
Size: 855x2035x605mm



204931
Double Sofa
Size: 855x1530x605mm



204981
Coffee Table
Size: 1200x800x395mm



204985
Coffee Table
Size: 1200x800x395mm



204971
Dining Table
Size: 2260x1050x750mm



204975
Dining Table
Size: 2260x1050x750mm



204908
Middle Sofa
Size: 845x650x565mm



204928
Middle Corner Sofa
Size: 1260x1260x565mm



204961
Side Table
Size: 500x500x400mm



204963
Side Table
Size: 500x500x400mm



204927
Left Corner Sofa
Size: 855x1425x605mm



204929
Right Corner Sofa
Size: 855x1425x605mm



204911
Dining Chair
Size: 565x635x640mm



204951
Sun Lounge
Size: 1970x885x555(835)mm



204910



204920



204990



2049110



204930



204940



2049120



2049130



204950



204960



2049140

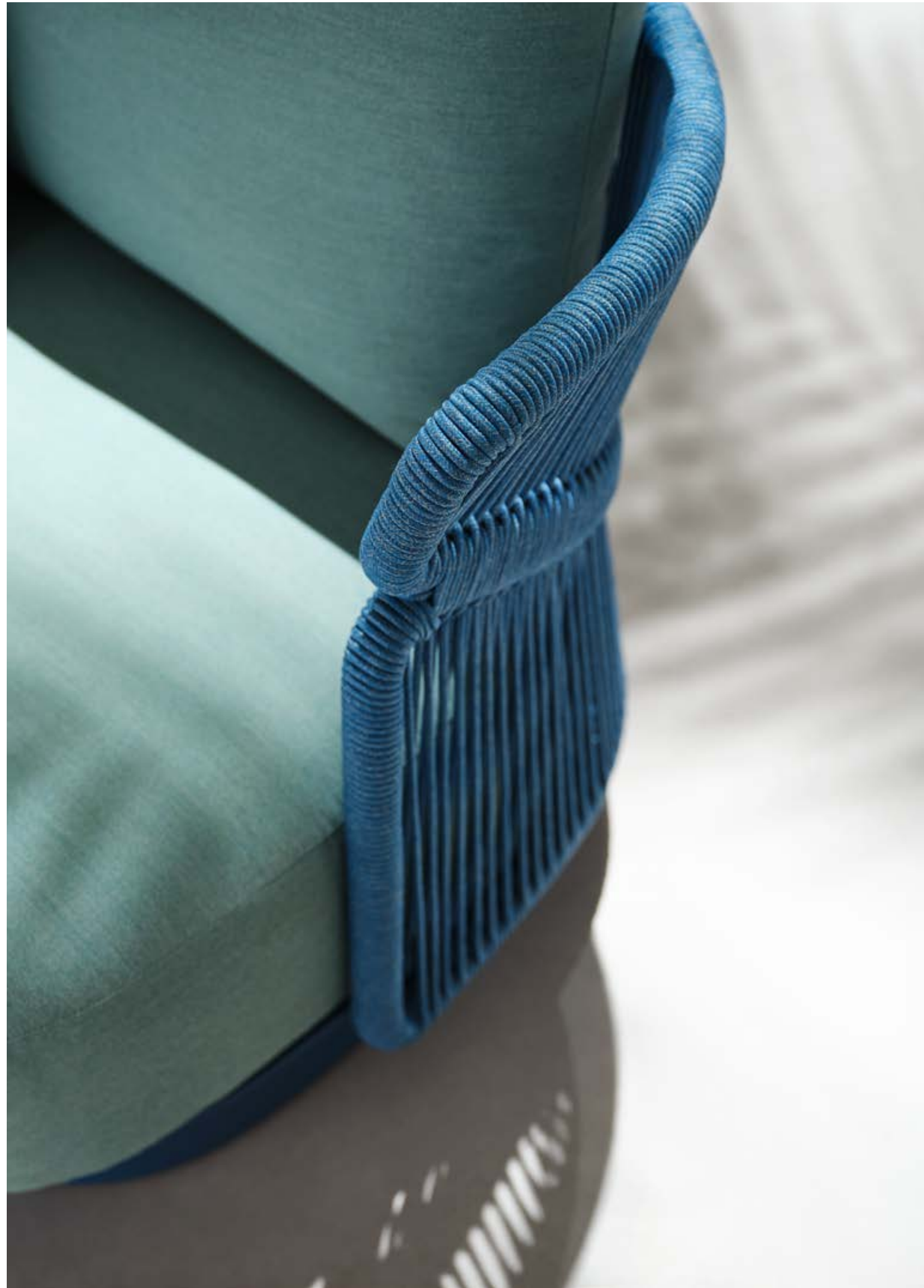


204970



204980

AiO





CLAUDIO BELLINI®

CLAUDIO BELLINI® is a Milan based multidisciplinary design studio founded by Claudio Bellini is built on an open-minded and innovative perspective, respectful to design heritage, specialized in product, furniture, and interior design since 1996. Integrating different disciplines gives the studio the privilege to provide long-term consultancy to clients by advising on graphic design, architecture, CMF, and brand identity.

Studio's capability of analyzing the complex dynamics of foreign markets has led CLAUDIO BELLINI® design studio to be recognized all around the world as one of the most influential European design practices.

Today, the studio continues evolving by enhancing the creativity with the support of a talented multinational team through their complementary skills.

AiO

A collection that is inspired by the charm of Italy, its naturally expressive sceneries, relaxing seashores, and sunshine that is still and pure. The AiO collection is a feeling of absolute relaxation and comfort that envelops you and takes you to the exact Italian feeling. The majestic and refreshing texture of sands inspires the grains and surface of this collection. A sight to the eyes with its special and distinct color, especially when the sun shines on it highlighting its detailed textures. The iconic element of this collection is done with rope, which is known to be strong and tough material. The blend and showcasing of rope details with smooth curved silhouettes make this collection one to remember!



AiO









Sink into a feeling of absolute relaxation and comfort as the AIO collection envelops you in its unique frame. Soft and warm cushioning embraces the structure along with its precise and atypical details in rope. Taking and reminding you of the content feeling of being by the sea as the winds sway in a typical Italian island.







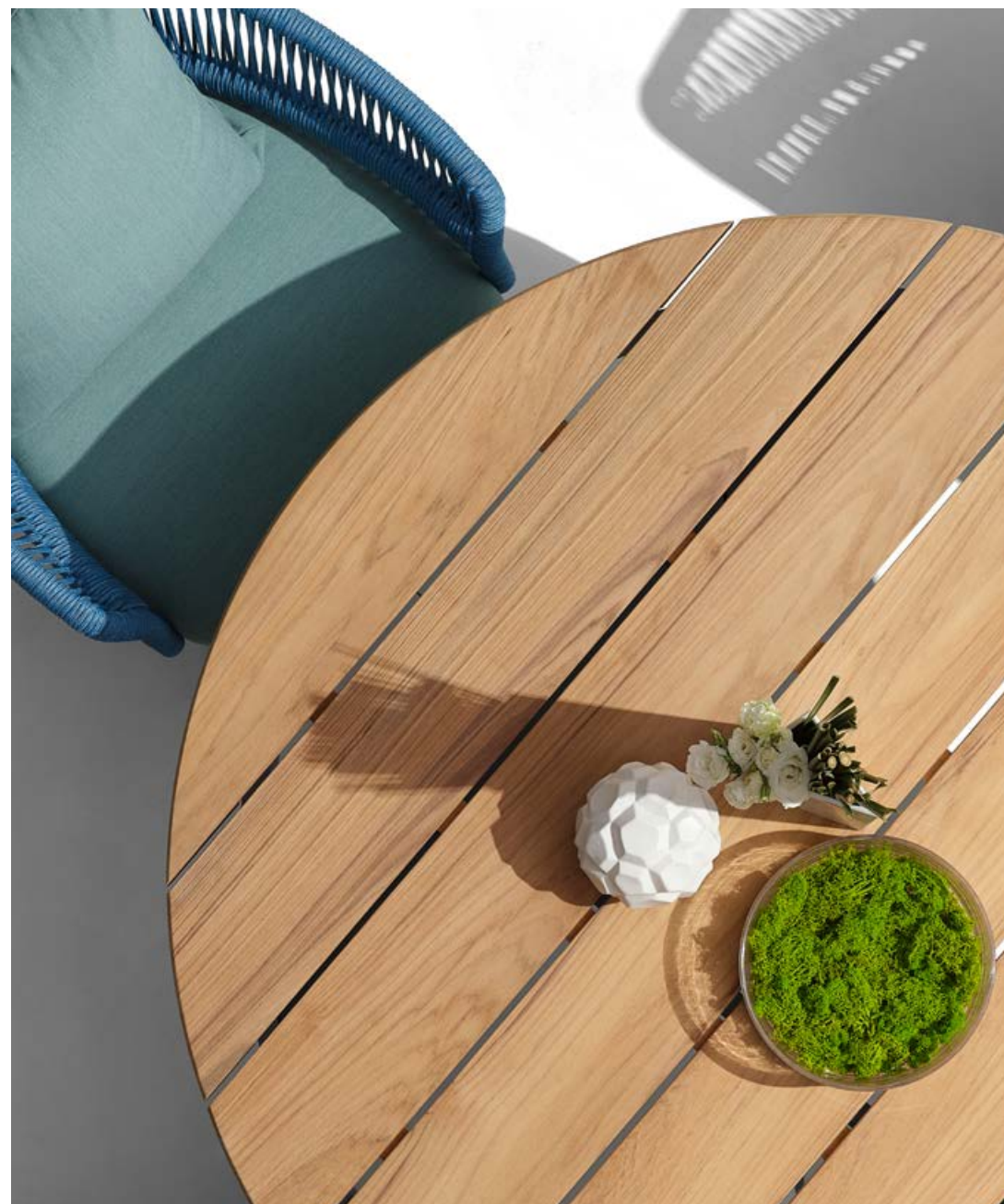
Super thick cushions with high density foams for an extra soft seating experience.



AiO

The iconic element of AiO collection is done with rope, which is known to be strong and tough material. The blend and showcasing of rope details with smooth curved silhouettes make this collection one to remember!









AiO

A refreshing sight to the eyes with its special and distinct color, especially when the sun shines on it highlighting its detailed textures. This collection is a feeling of home that is forever loved.



205521
Single Sofa
Size: 820x970x675mm



205572
Round Dining Table
Size: 1350x1350x760mm



205591
Flower Basket
Size: 500x500x720mm



205531
Double Sofa
Size: 820x1680x675mm



205541
Three-seater Sofa
Size: 820x2380x675mm



205592
Flower Basket
Size: 500x500x505mm



205593
Flower Basket
Size: 500x500x450mm



205581
Coffee Table
Size: 1100x750x320mm



205582
Coffee Table
Size: 800x750x390mm



205561
Side Table
Size: 470x440x435mm



205563
Side Table
Size: 500x500x450mm



205511
Dining Chair
Size: 620x650x730mm



205571
Oval Dining Table
Size: 2200x1100x760mm





205510



205520



205530



205540



205550



205560



205570



205580



205590

Cambusa





CLAUDIO BELLINI®

CLAUDIO BELLINI® is a Milan based multidisciplinary design studio founded by Claudio Bellini is built on an open-minded and innovative perspective, respectful to design heritage, specialized in product, furniture, and interior design since 1996. Integrating different disciplines gives the studio the privilege to provide long-term consultancy to clients by advising on graphic design, architecture, CMF, and brand identity.

Studio's capability of analyzing the complex dynamics of foreign markets has led CLAUDIO BELLINI® design studio to be recognized all around the world as one of the most influential European design practices.

Today, the studio continues evolving by enhancing the creativity with the support of a talented multinational team through their complementary skills.

CAMBUSA



CAMBUSA takes inspiration from the sea that appears golden beneath the sun-lit sky. As the sunbeams onto each piece from this collection, it takes shape and accentuates the detailed gradients and elements. An exemplary display of smooth and precise design that showcases clean-cut square features in an enlivening manner. Just as the sun, warm and inviting shades are used to accomplish a collection that is made to suit the surrounding with utmost finesse. Just as the sea grants new hope, this collection is designed with hopes of delivering extreme comfort and a welcoming feeling.

CAMBUSA







Cambusa collection is created with the primary idea of comfort at its core.







An exemplary display of smooth and precise work that showcases clean-cut square features in an enlivening manner. As the sunbeams onto each piece, it takes shape and accentuates the detailed gradients and elements that are crafted in extruded aluminium. Cambusa is made to suit the surrounding with utmost finesse and is a display of pure polished design.





Stable, comfortable and grand, which is the first impression of Cambusa.











Cambusa

Outdoor Furniture Collection

206221
Single Sofa
Size: 840x880x595mm



206237
Left Three-seater
Corner Sofa
Size: 840x2090x600mm



206239
Right Three-seater
Corner Sofa
Size: 840x2090x600mm



206231
Double Sofa
Size: 840x1540x595mm



206241
Three-seater Sofa
Size: 840x2200x595mm



206211
Dining Chair
Size: 655x680x675mm



206251
Sun Lounge
Size: 2200x860x885mm



206208
Middle Sofa
Size: 840x660x600mm



206209
Middle Double Sofa
Size: 840x1320x600mm



206281
Coffee Table
Size: 1355x850x315mm



206282
Coffee Table
Size: 840x840x235mm



206228
Middle Corner Sofa
Size: 840x840x600mm



206262
Footstool
Size: 840x660x275mm



206261
Side Table
Size: 420x420x275mm



206271
Dining Table
Size: 2400x1000x760mm



206227
Left Double Corner Sofa
Size: 840x1430x600mm



206229
Right Double Corner Sofa
Size: 840x1430x600mm



206273
Dining Table
Size: 3100x1000x760mm



Cambusa

Cambusa Combinations



206210



206220



2062110



2062120



206230



206240



2062130



2062140



206250



206260



2062150



206270



206280



206290



2062100

Borrromeo





CLAUDIO BELLINI®

CLAUDIO BELLINI® is a Milan based multidisciplinary design studio founded by Claudio Bellini is built on an open-minded and innovative perspective, respectful to design heritage, specialized in product, furniture, and interior design since 1996. Integrating different disciplines gives the studio the privilege to provide long-term consultancy to clients by advising on graphic design, architecture, CMF, and brand identity.

Studio's capability of analyzing the complex dynamics of foreign markets has led CLAUDIO BELLINI® design studio to be recognized all around the world as one of the most influential European design practices.

Today, the studio continues evolving by enhancing the creativity with the support of a talented multinational team through their complementary skills.

BORROMEO

A voyage to Europe in the summer and observing the wonderful blue reflections of the Mediterranean Sea, the concept is inspired by and conceptualized with the feeling that takes one to a sunny day near the seaside with an easy breeze blowing. Borromeo collection is a result that blends the expertise and know-how of HIGOLD with natural and pure elements in perfect harmony. This unique collection is where the simplicity of natural rope is combined with the modern lines of aluminum accurately to bring to life a feeling like no other. Mixing and blending conventional design with pleasant nostalgia! The scattering of sunlight by the molecules of the water inspires the textures and feel of this collection and is a reminder to relax and unwind in it.









It is a comfortable sofa allows you to spend many hours relaxing, and good lavish and attractive furniture makes your house and garden more attractive.











It has a natural lightness and elegance but never loses its
sturdiness and comfort.



Borromeo

Outdoor Furniture Collection

205421

Single Sofa

Size: 765x810x600mm



205481

Coffee Table

Size: 1200x700x350mm



205471

Dining Table

Size: 2135x1000x765mm



205431

Double Sofa

Size: 765x1490x600mm



205441

Three-seater Sofa

Size: 765x2170x600mm



205461

Side Table

Size: 525x525x455mm



205491

Flower Basket

Size: 525x525x605mm



205408

Middle Sofa

Size: 765x680x600mm



205428

Middle Corner Sofa

Size: 765x765x600mm



205492

Flower Basket

Size: 750x750x375mm



205427

Left Corner Sofa

Size: 765x1425x600mm



205429

Right Corner Sofa

Size: 765x1425x600mm



205411

Dining Chair

Size: 610x610x635mm



205451

Sun Lounge

Size: 2030x705x905mm



Borromeo
Borromeo Combinations



205410



205420



205430



205440



205450



205460



205470



205480



205490

DESIGN OF CLAUDIO BELLINI®
OUTDOOR FURNITURE

COLLECTIONS 2023

Visconti



CLAUDIO BELLINI®

CLAUDIO BELLINI® is a Milan based multidisciplinary design studio founded by Claudio Bellini is built on an open-minded and innovative perspective, respectful to design heritage, specialized in product, furniture, and interior design since 1996. Integrating different disciplines gives the studio the privilege to provide long-term consultancy to clients by advising on graphic design, architecture, CMF, and brand identity.

Studio's capability of analyzing the complex dynamics of foreign markets has led CLAUDIO BELLINI® design studio to be recognized all around the world as one of the most influential European design practices.

Today, the studio continues evolving by enhancing the creativity with the support of a talented multinational team through their complementary skills.



VISCONTI

VISCONTI collection is a fun and playful blend that is conceptualized and inspired by the curved lines within caves, along with discovering a similarity with the authenticity of wood. Visconti radiates impeccably under the sun just like the way the sun reflects on the surface of the textured cave walls. Designed and built with superior detail and quality, the comfortable cushioning conveys and offers an inviting feel and makes you enjoy the well-deserved quality time off. The smart assembling method and system of design give this collection a distinct style making it unique and unlike any other.





The overall structure of Visconti is simple, but the details of the rope mesh enrich the complete design to become more luxurious. It is a good combination of softness and rigidity to offer an elegant and gentle impression.









Radiating impeccably under the sun, it is designed and built with superior details and quality. A collection to make you enjoy the well-deserved quality time off.







HIGOLD®



Visconti
Outdoor Furniture Collection

301921
Single Sofa
Size: 860x860x695mm



301931
Double Sofa
Size: 860x1540x695mm



301941
Three-seater Sofa
Size: 860x2220x695mm



301908
Middle Sofa
Size: 860x680x695mm



301928
Middle Corner Sofa
Size: 860x860x695mm



301927
Left Corner Sofa
Size: 860x1450x695mm



301929
Right Corner Sofa
Size: 860x1450x695mm



301911
Dining Chair
Size: 650x685x830mm



301981
Coffee Table
Size: 1235x700x380mm



301961
Side Table
Size: 455x455x455mm



301971
Dining Table
Size: 2410x1000x750mm



Visconti Combinations

301910



301920



301930



301940



301950



301960



301970



301980



301990



3019100



3019130

